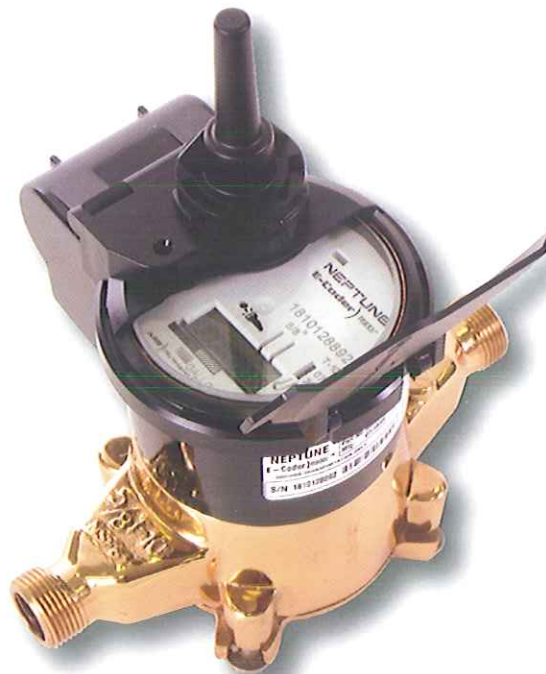




Technology for Conservation and Leak Detection

Several years ago the Authority upgraded to Neptune 900i water meters, which utilize the latest technology in electronics. It was an important investment because the meters can provide enhanced diagnostics to the user, and so allows the Authority to help our customers with early detection of intermittent or continuous water leaks in their systems. The same diagnostics can help our customers promote conservation, and so prevent higher costs that would result from unwanted water leaks.



Neptune R900i® Radio Frequency Meter

Water costs money... don't waste it!

A dripping faucet or fixture can waste 3 gallons a day... a total of 1095 gallons a year.

	U.S. Equivalent	Metric Equivalent
Fluid oz.	8 fl. drams (1.804 cu. inches)	29.573 milliliters
Pint	16 fl. oz. (28.875 cu. inches)	0.473 liter
Quart	2 pints (57.75 cu. inches)	0.946 liter
Gallon	4 quarts (231 cu. inches)	3.785 liters

Waste per quarter at 60 psi water pressure

Diameter of stream	Gallons
● 1/4"	1,181,500
● 3/16"	666,000
● 1/8"	296,000
● 1/16"	74,000

A continuous leak from a hole this size would over a three month period, waste water in the amounts shown above.